

## INSTALLATION INSTRUCTION

## SIDE STEPS ALUMINIUM



**PICKUPATTITUDE.COM**

**QUESTIONS BEFORE INSTALLATION ?**



**CONTACT@PICKUPATTITUDE.COM**

**+33 4 94 00 37 00**



N° SIRET : 492 664 172 00029



**TRANSIT  
CUSTOM**

Fitted Ford Transit Custom



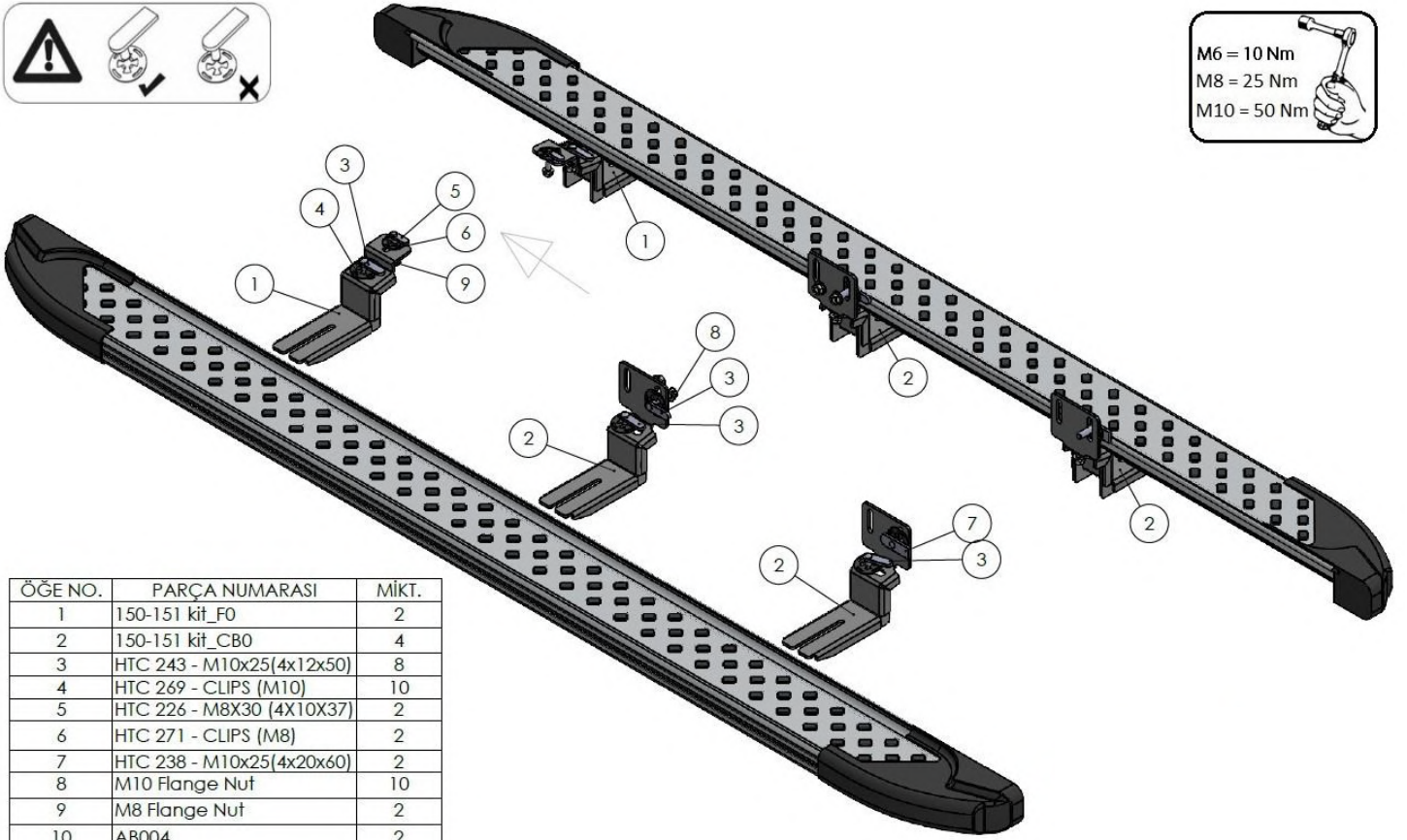
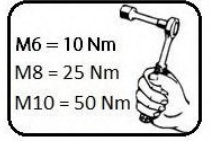
Fitting time: 1h30



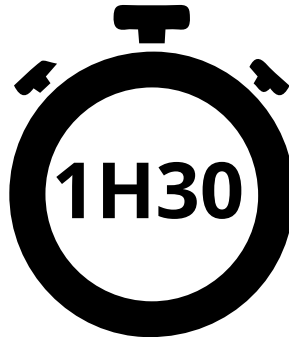
# Safety Instructions

- Carefully unpack the product and check whether the product is correct and complete. (Blows, scratches, dents, etc.)
- Two personnel should be present during the assembly process. Perform the assembly process with two people.
- Take all your safety precautions before starting the assembly.
- Take the vehicle to be assembled to the area to be mounted in a suitable and positioned position. (Lift etc.)
- While the vehicle is being taken off the lift, position it parallel to the lift and properly.
- Be sure to supply the tools required for the assembly process in advance.
- Check that all materials are complete and complete by referring to page 3 of the installation manual.
- When attaching the product to the apparatus, the forward, backward / right, left settings should be correct. Care should be taken not to collide with the mat or any other place on the vehicle.
- During the assembly of the product, carefully follow all the steps by carefully following the assembly guide that comes out of the box of the product.
- The product apparatus is designed to assemble to your vehicle without any welding. Do not weld in any way.
- Do not tighten the bolts before aligning the product to the apparatus and the vehicle.
- After making all your adjustments, tighten all the bolts.
- Do not throw away the boxes until the assembly process is completed.
- Finally, when the assembly is finished, make your checks and finish the process and throw the packaging away.

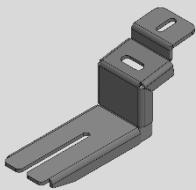
Note: Our company is not responsible for the problems caused by not following the general safety instructions above.



ÖGE NO.	PARÇA NUMARASI	MİKT.
1	150-151 kit_F0	2
2	150-151 kit_CB0	4
3	HTC 243 - M10x25(4x12x50)	8
4	HTC 269 - CLIPS (M10)	10
5	HTC 226 - M8X30 (4X10X37)	2
6	HTC 271 - CLIPS (M8)	2
7	HTC 238 - M10x25(4x20x60)	2
8	M10 Flange Nut	10
9	M8 Flange Nut	2
10	AB004	2

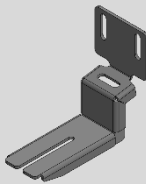


# Box Contents



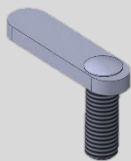
1

DRIVER/PASSENGER SIDE  
FRONT BRACKET  
x2



2

DRIVER/PASSENGER SIDE  
MIDDLE/REAR BRACKET  
x4



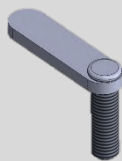
3

HTC 243 M10x25  
x8



4

HTC 269 M10 CLIPS  
x10



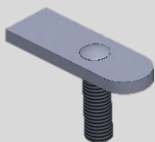
5

HTC 226 M8x30  
x2



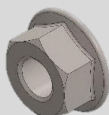
6

HTC 271 M8 CLIPS  
x2



7

HTC 238 – M10x25  
x2



8

M10 Flange Nut  
x10

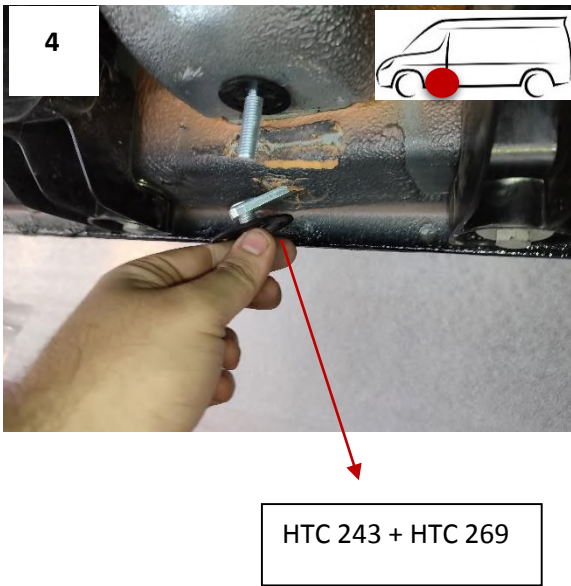
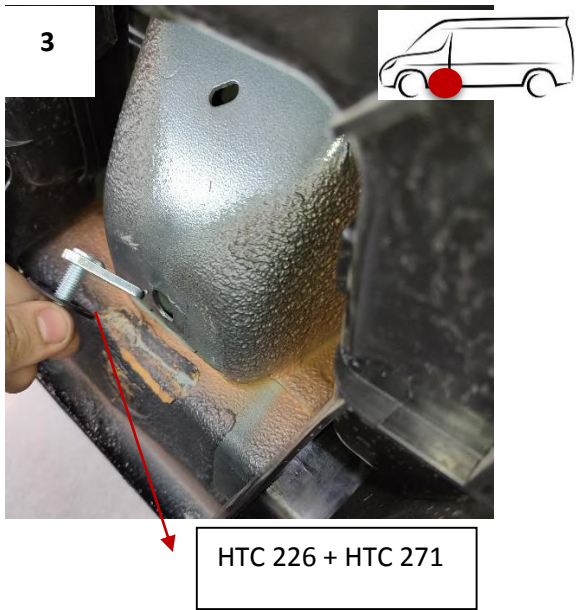
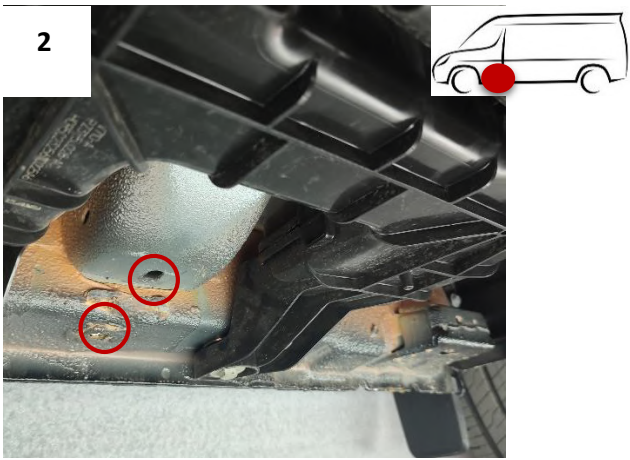


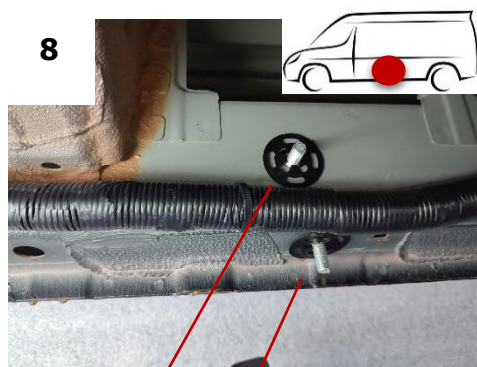
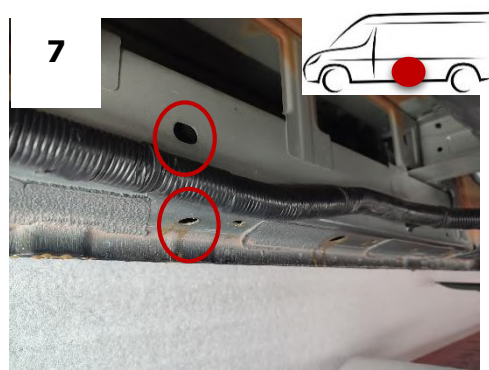
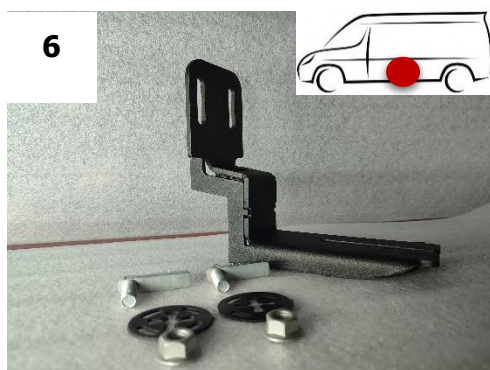
9

M8 Flange Nut  
x2

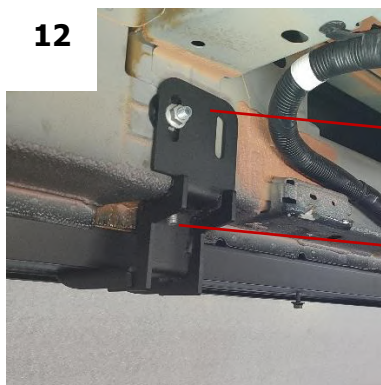
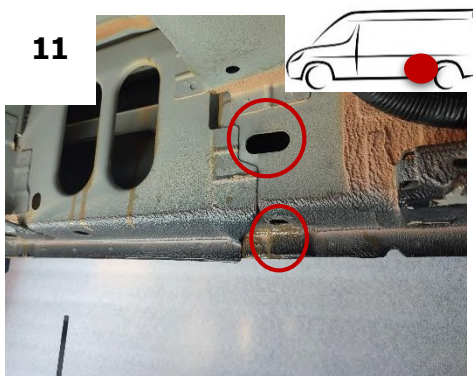
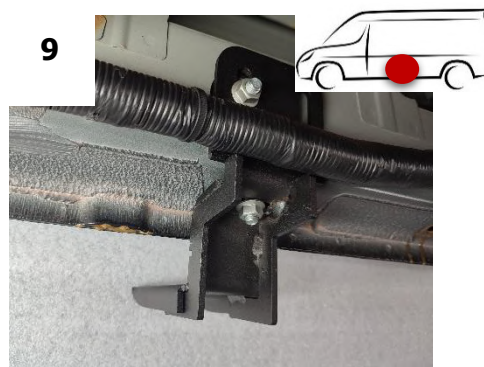


# Brackets Assembly





HTC 243 + HTC 269



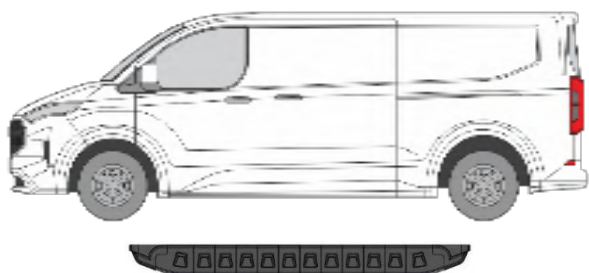
HTC 238 + HTC 240

HTC 243 + HTC 269

**REPEAT FOR OTHER SIDE**



## Side Steps Assembly



***Important! After positioning the step in the appropriate position, tighten the M8 nuts with 25 Nm and the M10 nuts with 50 Nm.***

