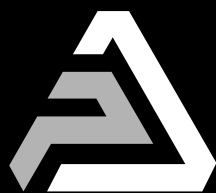


INSTALLATION INSTRUCTION

SIDE STEPS ALUMINIUM



PICKUPATTITUDE.COM

QUESTIONS BEFORE INSTALLATION ?



CONTACT@PICKUPATTITUDE.COM

+33 4 94 00 37 00



N° SIRET : 492 664 172 00029



CRAFTER

Fitted Volkswagen Crafter



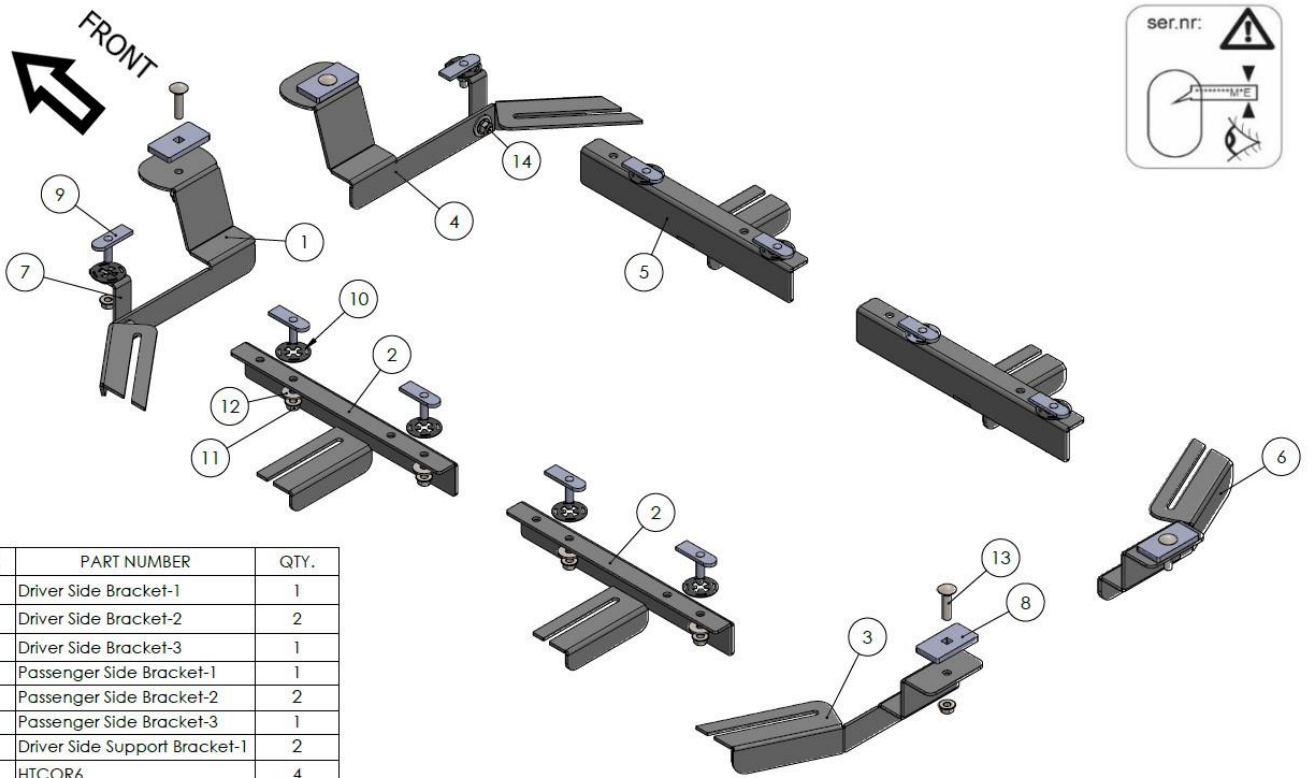
Fitting time: 1h



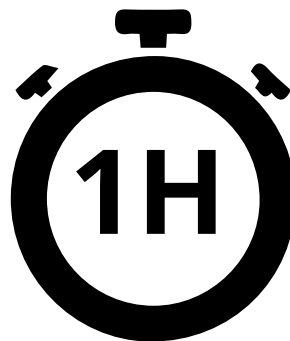
Safety Instructions

- Carefully unpack the product and check whether the product is correct and complete. (Blows, scratches, dents, etc.)
- Two personnel should be present during the assembly process. Perform the assembly process with two people.
- Take all your safety precautions before starting the assembly.
- Take the vehicle to be assembled to the area to be mounted in a suitable and positioned position. (Lift etc.)
- While the vehicle is being taken off the lift, position it parallel to the lift and properly.
- Be sure to supply the tools required for the assembly process in advance.
- Check that all materials are complete and complete by referring to page 3 of the installation manual.
- When attaching the product to the apparatus, the forward, backward / right, left settings should be correct. Care should be taken not to collide with the mat or any other place on the vehicle.
- During the assembly of the product, carefully follow all the steps by carefully following the assembly guide that comes out of the box of the product.
- The product apparatus is designed to assemble to your vehicle without any welding. Do not weld in any way.
- Do not tighten the bolts before aligning the product to the apparatus and the vehicle.
- After making all your adjustments, tighten all the bolts.
- Do not throw away the boxes until the assembly process is completed.
- Finally, when the assembly is finished, make your checks and finish the process and throw the packaging away.

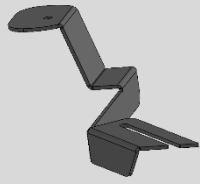
Note: Our company is not responsible for the problems caused by not following the general safety instructions above.



ITEM NO.	PART NUMBER	QTY.
1	Driver Side Bracket-1	1
2	Driver Side Bracket-2	2
3	Driver Side Bracket-3	1
4	Passenger Side Bracket-1	1
5	Passenger Side Bracket-2	2
6	Passenger Side Bracket-3	1
7	Driver Side Support Bracket-1	2
8	HTCOR6	4
9	HTC 238 - M10x25(4x20x60)	10
10	HTC 269 - CLIPS (M10)	10
11	M10 - Hex Flange Nut	18
12	M10 Washer	18
13	M10X45 - Square Neck Bolt	4
14	M10x25 - Hex Flange Bolt	2

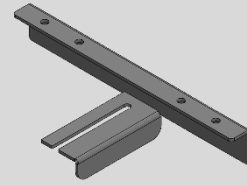


Box Contents



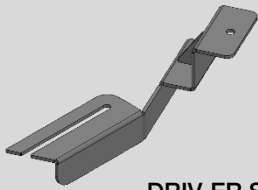
1

DRIVER SIDE BRACKET-1
x1



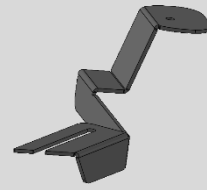
2

DRIVER SIDE BRACKET-2



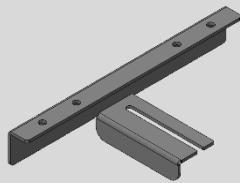
3

DRIVER SIDE BRACKET-3
x1



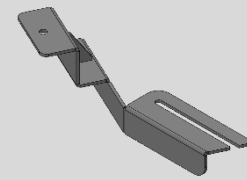
4

PASSENGER SIDE BRACKET-1



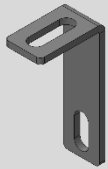
5

PASSENGER SIDE BRACKET-2
x2



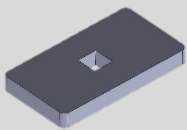
6

PASSENGER SIDE BRACKET-3



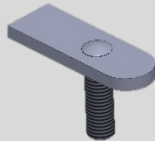
7

DRIVER SIDE SUPPORT BRACKET-2
x2



8

HTCOR6
x4



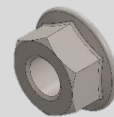
9

HTC 238 M10x25
x10



10

HTC 269 M10 CLIPS
x10



11

M10 FLANGE NUT
x18



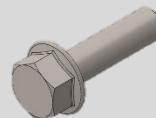
12

M10 -Washer
x18



13

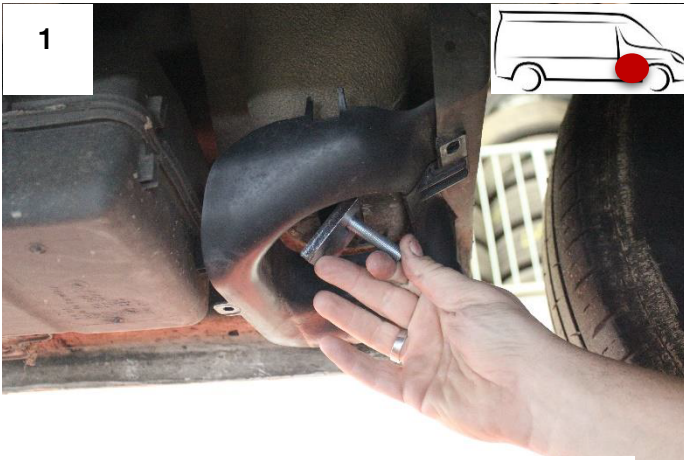
M10x45 SQUARE
NECK BOLT
x4



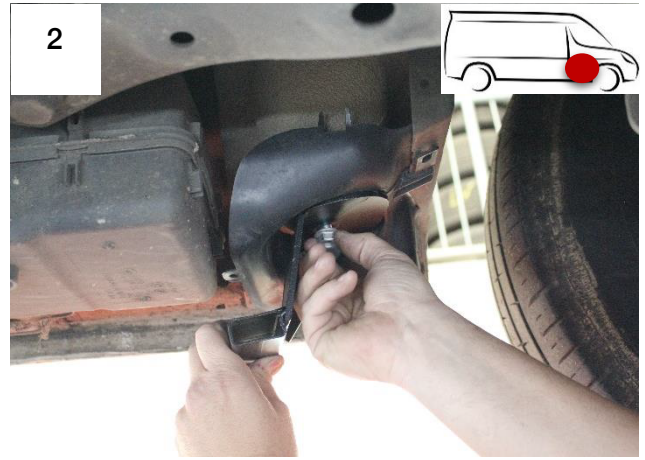
14

M10x25 - Flange Bolt
x2

Brackets Assembly



To mount the passenger front bracket, insert the HTCOR6 + M10x45 square neck bolt into the area marked in the figure.



Fix the passenger front bracket to the vehicle with the help of M10 nut.



Remove cap and place.



For the middle brackets, remove 2 caps and place boldplates and connect the bracket.

You can use any place/hole, we prefer to divide the forces.



To mount the passenger front bracket, insert the HTCOR6 + M10x25 hex bolt into the area marked in the figure.

REPEAT FOR OTHER SIDE